



Overhead Line Construction

SERVICE AND MOBILE INSPECTION SERVICE IN THE ROOF SPACE



Northern location

Grasweg 18-22 | 27607 Geestland

Tel. +49 (0)474-327-86010

Fax +49 (0)911-83-06-57

E-Mail info-nord@dressel-seile.de

Fa. Ing. Karl Dressel OHG

Hutbergstraße 31 | 90475 Nürnberg-Fischbach

Tel. +49 (0)911-83-10-31

Fax +49 (0)911-83-06-57

E-Mail info@dressel-seile.de



OVERHEAD LINE CONSTRUCTION

„High-quality products and expert knowledge that are crucial for safe and successful construction, maintenance of overhead lines and a reliable energy supply.“

Welcome to our brochure on products for overhead line construction! Discover our wide range of high-quality and reliable products, developed specifically for your field of application.

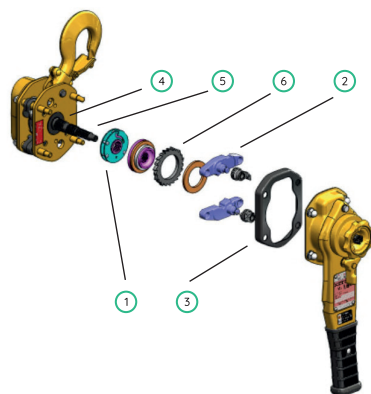
We offer everything you need for the construction and maintenance of overhead lines—from anchor ropes and chain hoists to chain slings and PPE. Our products stand out due to their high quality, durability, and ease of use, helping you to maximize efficiency and safety in your overhead line projects.

Our experienced experts understand the specific demands of overhead line work and are here to assist you in selecting the right products for your application. We proudly provide a complete solution and are happy to support you with further inquiries and consultations.

KITO LB-SL Chain Hoist

The KITO chain hoist with safety interlock module has a function that prevents the load from falling if the load pressure brake fails by locking the pinion shaft and stopping the load immediately. The safety interlock module is set so that the safety function is not triggered in freewheel mode.

- ✓ Hand lever hoist with safety lock module to prevent load drop.
- ✓ Optimized for lightweight handling.
- ✓ Long service life due to high material strength.
- ✓ Certified by DGUV-GS.
- ✓ Retrofit from LB to LB-SL possible.
- ✓ Unique hardening process



- ① Safety interlock module
- ② Cam stopper
- ③ Safety interlock cover
- ④ Frame A - Sub-assembly 1
- ⑤ Pinion shaft
- ⑥ Ratchet disk

Crosby Colt



Straightpoint COLT is a wire rope tension meter with a low weight that is easy to use. It enables fast and accurate measurement of tensions up to 5000 kg on a wire rope diameter up to 25 mm.

- ✓ For even tensioning of masts
- ✓ Up to 100 m wireless range at Bluetooth
- ✓ Till Ø25mm wire rope
- ✓ Protection class IP67 or NEMA6
- ✓ Battery life of 1000 operating hours
- ✓ Unlimited wire rope - alibration database via app

Can be mounted directly on tensioned lines/ cables.

Crosby Bluelink



The "BlueLink" crane scale with wireless Bluetooth technology and a capacity of 6,500 kg is intended for the replacement of older mechanical products.

- ✓ Wireless range 100m
- ✓ Suitable for 6.5-ton shackle
- ✓ HHP app via Bluetooth on all iOS or Android devices usable
- ✓ Protection class IP67 or NEMA6

BlueLink is combined with shackles such as Crosby G2130.

Wire Rope Slings / Thimbles



Cylindrical pressing



Conical pressing

Specially designed for use as load handling equipment in lifting and transportation technology.

- ✓ Available with cylindrical or conical ferrules.
- ✓ Certified according to DIN EN 13414-1.
- ✓ Use as a guy rope and safety rope

In general, both variants are suitable for use as load handling attachments; the choice depends on your specific requirements and application conditions.

Labeling



Rope Ø (mm)	Load capacity (kg)
8	700
10	1.000
12	1.500
14	2.000
16	2.700
18	3.150
20	4.000

Rope protection thimble



- ✓ Protects the rope from deformation and damage
- ✓ Increases the radius

Shackles



In certain situations, a particularly high load capacity is required, while in others only limited space is available for lifting technology. For these situations, the Crosby Group - Gunnebo Industries offers a comprehensive range of.

- ✓ High-strength steel US Federal Specification cation RR.C-271
- ✓ Grade 6
- ✓ Hot-dip galvanized
- ✓ Safety factor 6:1
- ✓ Temperature: 40-200 degrees
- ✓ With screw bolt or nutter and cotter pin

Round Slings



Round slings are characterized by their robustness, flexibility and load-bearing capacity and are ideal for transporting heavy loads in various working environments.

- ✓ Single sheath
- ✓ Double sheath
- ✓ Reinforced center seam
- ✓ Heavy-duty round slings
- ✓ With premium sheath
- ✓ In accordance with standard DIN EN 1492

Webbing Slings



Lifting slings are characterized by their high load-bearing capacity and flexibility and are ideal for the safe and reliable transport of heavy loads.

- ✓ DIN EN 1492 manufactured
- ✓ Specially for use in the lifting and transportation industry

Lifting Assemblies & Tools



Cable drum crossbar

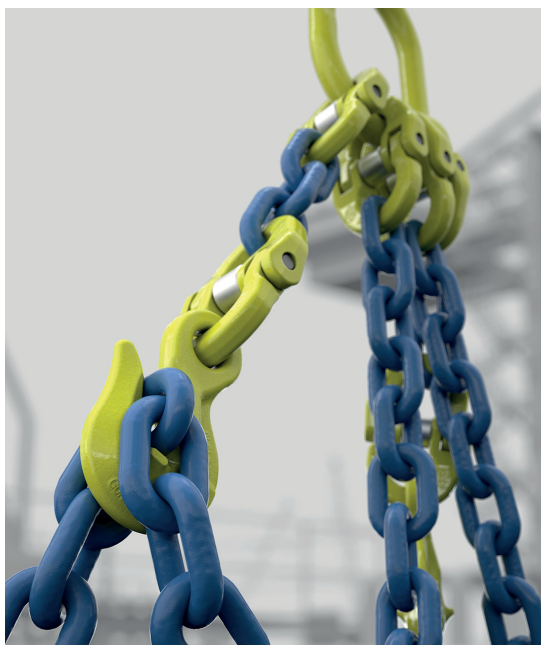
Loading beams for the safe lifting and transportation of cable drums.

- ✓ Small dimensions, light weight
- ✓ Galvanized tubular steel profile
- ✓ Adjustable crossbar



Lifting Point

Anchor points serve as a connection between the load or person and the lifting or securing system. Whether for lifting heavy components or for fall protection - they ensure maximum safety. Correct selection, professional installation and regular testing are important. Only tested anchor points guarantee a secure hold and standard-compliant work.



Chain Slings - Gunnebo

The high-quality GrabiQ sling system is an absolute innovation in lifting technology that offers a wide range of options: The assembly of suspension, chain connection and shortener in a single unit leads to a reduction in the number of components for chain slings.

- ✓ Chain slings Highly tempered special steel
- ✓ 25 % higher load capacity with lower weight
- ✓ Long service life
- ✓ Grade 10 with safety load hook

Holmatro Hydraulics



The PA series is the most compact, single-acting, 2-stage hand pump in the hand pump range. The pump has an ergonomic design, robust and compact construction, is easy to service and maintain and combines low effort with a powerful delivery rate.

Advantages

- ✓ Lightweight; easy to carry and use
- ✓ Low effort required; minimal physical strain
- ✓ Soft-grip handle; more comfort and grip
- ✓ Anti-slip rubber on the underside; pump is stable and does not move
- ✓ Precisely adjustable pressure relief valve; loads can be lowered safely and in a very controlled manner
- ✓ Oil level glass in the tank; easy control of the oil level in horizontal and vertical position



Tiger Klemme



- ✓ Load capacities from 0.5t to 6.3t
- ✓ Safety screw clamp with two suspension / lifting eyes, flexible and versatile
- ✓ High clamping force thanks to pivoting pawl with serrated surface
- ✓ Load is held in the event of vibrations
- ✓ Visual safety check: phosphorescent markings on the pawl and sleeve indicate whether the clamp has been tightened correctly
- ✓ Meets all requirements of BS EN 13155:2003

Grab hoist



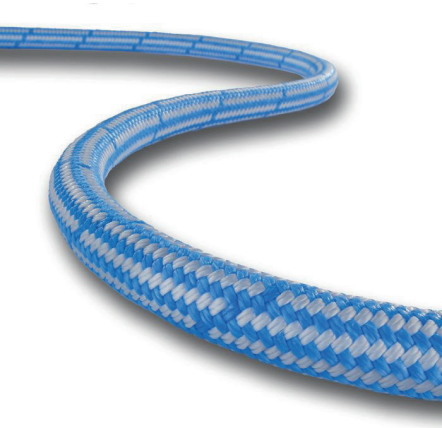
- ✓ Lightweight and easily portable for use in any location
- ✓ For safe and reliable operation in all directions, either in a straight line or with deflection pulleys over an unlimited length
- ✓ Position loads with millimetre precision
- ✓ Safe release system
- ✓ Load capacity from 800 - 3200 kg
- ✓ Full range of accessories available - pulleys, pulleys, floor anchors and winders

Textile ropes - versatile, strong, high quality

Whether textile ropes, sheave ropes or winch ropes - we offer you a comprehensive range of high-quality hollow flat ropes and kernmantle ropes for a wide variety of applications. Our ropes impress with their resilience, durability and customized design for your needs.

Eigenschaften von DuraTEN / DuraTEN+ und HyperTEN / HyperTEN+

Material	DuraTEN / HyperTEN: UHMWPE (Ultrahochmolekulares Polyethylen) DuraTEN+ / HyperTEN+: Dyneema® SK78, (wahlweise aus XB0)
Konstruktion	12-er Geflecht, wahlweise mit Mantel aus PES oder UHMWPE
Seilfarbe	DuraTEN / DuraTEN+: dunkelgrau HyperTEN / HyperTEN+: silbergrau
Spezifisches Gewicht [g/cm³]	0,97 (schwimmfähig)
Schmelzpunkt [°C]	140
Bruchdehnung [%]	3,5
Gewichtstoleranz	+/- 5 %
Durchmessertoleranz	+/- 5 %
Wasseraufnahme [%]	0
UV-Beständigkeit	ohne bzw. mit UHMWPE-Mantel: gut, mit PES-Mantel: sehr gut
Abriebfestigkeit ohne Mantel	trocken: sehr gut / nass: sehr gut
Abriebfestigkeit mit PES-Mantel	trocken: gut / nass: sehr gut
Abriebfestigkeit mit UHMWPE-Mantel	trocken: sehr gut / nass: sehr gut
Temperaturbeständigkeit	70°C max. dauerhaft
Chemikalienbeständigkeit	sehr gut
Eigenschaften trocken/nass	Bruchkraft trocken = Bruchkraft nass
Kriechen	DuraTEN / HyperTEN: bei hohen, lang andauernden Lasten DuraTEN+ / HyperTEN+: mit verminderter Kriechneigung im Vergleich zu UHMWPE
Biegewechselbeständigkeit	DuraTEN / HyperTEN: gut DuraTEN+ / HyperTEN+: sehr gut (exzellent aus XB0)



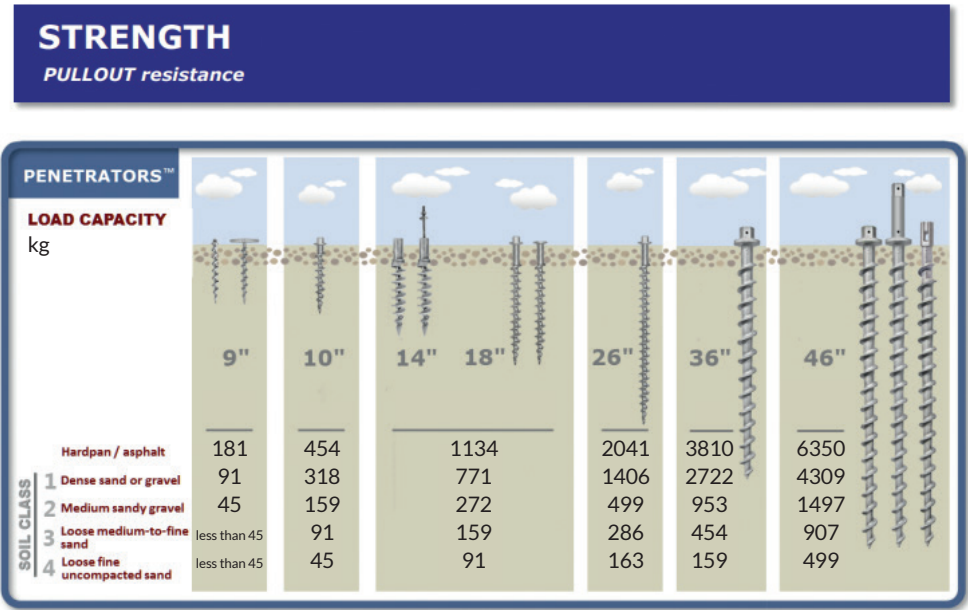
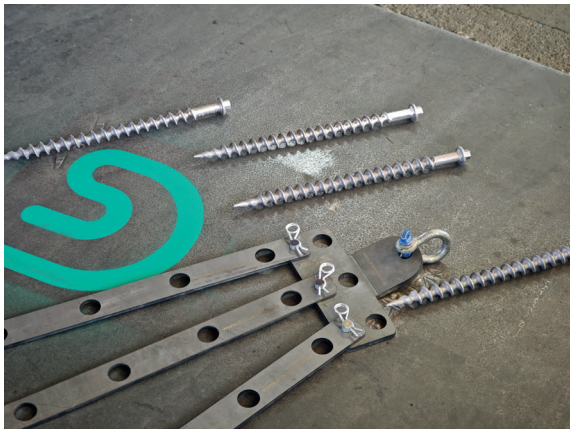
Ground anchor made of aircraft aluminum

Ground anchors made of aircraft aluminum - light, flexible, well thought-out

Our ground anchors made of high-strength aircraft aluminum offer a light and flexible solution for a wide range of applications - from temporary anchoring to permanent securing systems.

Thanks to their low weight, they are easy to transport and can even be used in difficult to access terrain without any problems.

A particular highlight is our innovative fan system, which ensures optimum force distribution - even in changeable or challenging ground conditions. This means that our ground anchors guarantee maximum stability with minimum effort.



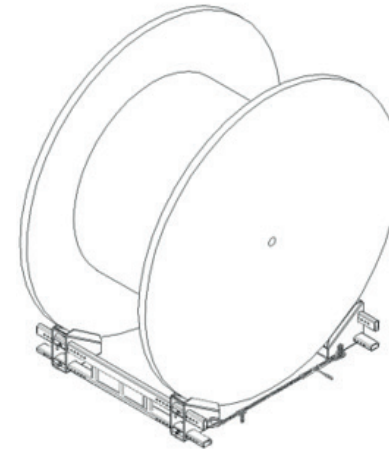
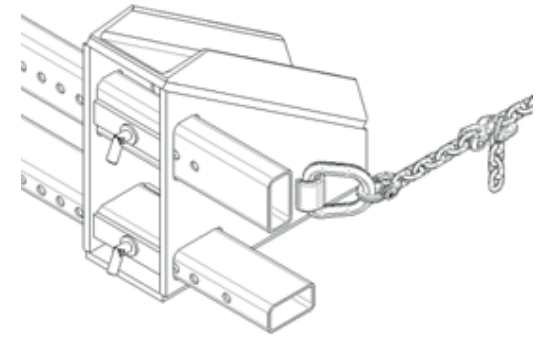
Dressel - hydraulic mast alignment system

- ✓ No reaching into the danger zone
- ✓ Horizontal and vertical alignment
- ✓ In combination with the Dyneema chain, very flexible and easy shortening
- ✓ Easy handling and operation
- ✓ Hydraulics are very light
- ✓ Little effort required
- ✓ Optimum alignment thanks to two-stage hydraulics
- ✓ No more heavy steel foot winches
- ✓ Set available for vertical and horizontal Mast alignment



Dressel - transport wedge set for load securing

- ✓ Easy handling
- ✓ Standard for transport
- ✓ Safe solution for loading
- ✓ Adaptable to different drum diameters
- ✓ Reduce or stop drum movement
- ✓ Secure the cable drum in the higher tonnage range
- ✓ Increase safety in drum transport



Unwinder

- ✓ Foldable
- ✓ Easy handling
- ✓ Optimized castor storage
- ✓ Stable hold on the floor
- ✓ Hot-dip galvanized



Dyneema chain



Dyneema chains offer all the performance and flexibility of a steel chain, but are considerably lighter than steel chains and grummets with higher strength.

- ✓ UV-resistant
- ✓ Very good chemical resistance
- ✓ Seawater-resistant
- ✓ Non-conductive - non-corrosive
- ✓ The only chain that floats on water due to its low density of < 1
- ✓ Withstands high impact loads without losing its tension
- ✓ Easy, flexible use and handling
- ✓ Operating temperatures: -40 °C to + 70 °C
- ✓ Easy to clean
- ✓ Can be shortened to any length
- ✓ Individual links can be repaired
- ✓ Made in EU

PPE



Using the right PPE is crucial to ensure safety in the workplace and to minimize potential risks.

Products

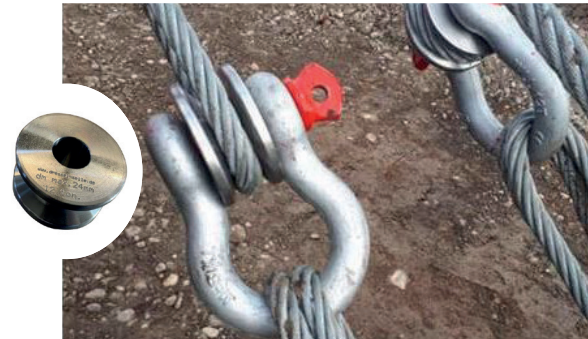
- ✓ Safety harnesses
- ✓ Fall arresters
- ✓ Helmets
- ✓ PPE sets

Areas of application

- ✓ Overhead line construction
- ✓ Aerial work platforms
- ✓ Ladders
- ✓ Platforms and flat roofs



Additional components



Rope protection roller for wire ropes

- ✓ Enlarges the radius of the shackle pin to provide optimum protection for the wire rope
- ✓ Available for all shackles tonnages
- ✓ Available in tool steel or stainless steel
- ✓ Made in Germany

Not to be used as a guide / deflection roller!



Edge protection cylinder

- ✓ Protects the load securing
- ✓ Increases the service life

KDS-Care

Today's requirements for the documentation of testable tools are increasing enormously. More and more frequently, own, issued and proper documentation is required for test parts.

For the operator of the tools, this results in a great deal of document management and the need to have the correct document for the test part available at the required time.

Dressel has been taking on this challenge since 2008: records all test parts in its own test database, manages them at and provides them with the valid test certificate. The result is a continuously growing system that can be accessed online with personalized access from anywhere.

This means that all lifting technology equipment can be tested, maintained and repaired at. We have trained test technicians who will take responsibility for carrying out the legally required inspection of your equipment.

Our range of services

- ✓ Offers
- ✓ Documentation
- ✓ On-site service
- ✓ Repairs
- ✓ Service contracts

Individual and special inspections must be carried out in our company!

We inspect at our premises or at your premises with our mobile service vehicles.



- ✓ Lifting gear
- ✓ Load handling attachments
- ✓ Lifting beams
- ✓ Lifting gear of all kinds
- ✓ Slewing and small crane systems, and industrial cranes
- ✓ Hydraulics
- ✓ Magnets
- ✓ PPE
- ✓ Ladders and steps
- ✓ and much more

Testing is carried out in accordance with the requirements of the FSA, the employers' liability insurance associations and the manufacturer's specifications. You have your costs firmly under control and increase the service life of your technical equipment. Your "tools" are always ready for use.



Dressel – your sales company for hoists, special wire ropes, chain slings, PPE, hydraulics, access technology, measurement technology and training. With our KDS Care inspection program, we also support you in the management of your equipment, the maintenance service and the availability of your equipment data through mobile tracking. All industrial and construction site equipment at is also tested, maintained and repaired by trained test technicians in accordance with the legal requirements.

ContaCt

Fa. Ing. Karl Dressel OHG

Hutbergstraße 31 | 90475 Nürnberg-Fischbach

Tel. +49 (0)911-83-10-31

Fax +49 (0)911-83-06-57

E-Mail info@dressel-seile.de

Northern location

Grasweg 18-22 | 27607 Geestland

Tel. +49 (0)474-327-86010

Fax +49 (0)911-83-06-57

E-Mail info-nord@dressel-seile.de

